

It's hard to think of a more rewarding hobby than beekeeping. Bees are such fascinating little creatures.

# Welcome to beekeeping with Flow<sup>®</sup> Hive...



Less  
labour,  
more  
love...

Bees have been around for millions of years and humans have always had a taste for honey.

There's a theory the calorie-dense super food even had a part to play in the evolution of the human brain.

But in recent years, our relationship with bees has become fraught. Our impact on the planet has led to a decline in bee populations, with potentially dire consequences for all plants and animals on Earth, including humans.

If you're new to the hobby, you'll find, as many do, that it quickly becomes addictive. Aside from the honey, keeping your own hive will also assist your other gardening efforts, as the pollination service bees provide will increase the abundance of your fruit and nut trees, and most plants you have in the garden.

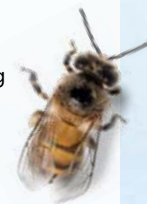
Bees are a vital part of our food supply chain and the broader ecosystem. The more bees we have, the better off we are.



In fact, a third of our food crops and more than half of all plants are pollinated by bees.

Flow technology makes harvesting honey much easier for the bees and beekeeper. However, beekeeping is a labour of love and you must care for the welfare of the hive to maintain a healthy colony. This marvellous journey of discovery is never-ending.

You can spend whole afternoons watching the bees collect pollen and nectar and you'll love communing with your hive and becoming more in tune with the little bit of the planet you call home.



But up until now, the honey extraction process has been a real chore. It's heavy, sweaty work often involving lots of bee stings, expensive equipment and sore muscles.

Cedar Anderson knew all about that, having kept bees since he was a kid. During an especially hot and painful harvest about 10 years ago, he decided there had to be a better way.



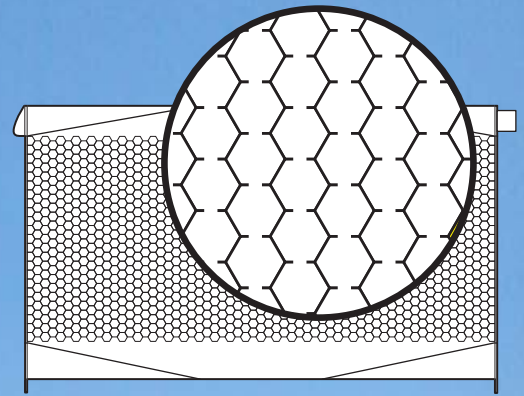
Stu and Cedar Anderson

Cedar and his father, Stuart Anderson, made a beeline to the shed and tinkered away on various ideas, eventually coming up with Flow Hive, "the beekeeper's dream"...

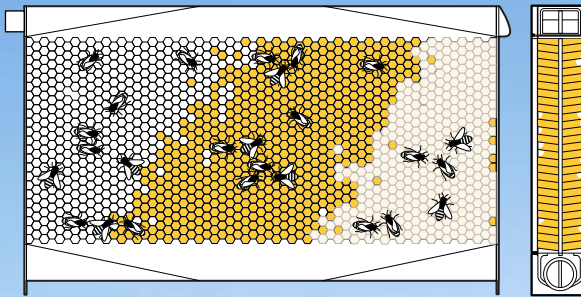
# WHAT IS A FLOW HIVE?

A Flow Hive allows the beekeeper to see the bees, know when the honey is ready and harvest it in the gentlest way possible for both the bees and the beekeeper!

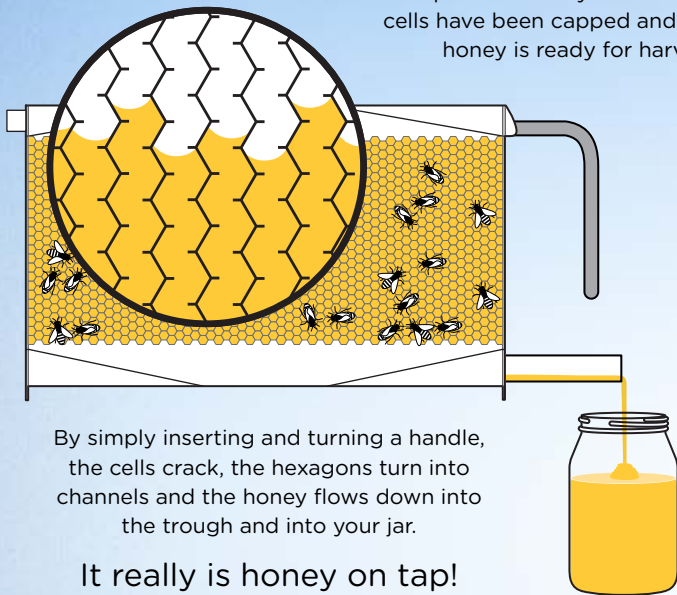
The Flow Frame is the most revolutionary beekeeping invention since the Langstroth hive was designed in 1852.



Flow Frames are partially built honeycomb which the bees complete, fill with honey and cap with wax. They are made in Australia from BPA- and BPS-free plastic.



With the unique, clear end-frame view, beekeepers can easily see when the honey cells have been capped and when the honey is ready for harvest.



By simply inserting and turning a handle, the cells crack, the hexagons turn into channels and the honey flows down into the trough and into your jar.

It really is honey on tap!





Learn more at [honeyflow.com](http://honeyflow.com)

## Top tips for newbees New to beekeeping? Here's how to get started...

- Read widely and learn all about bees
- Watch our beekeeping videos
- Talk to other beekeepers via your local beekeeping group or at the forums at [honeyflow.com](http://honeyflow.com)
- Think about where you will situate your hive and brush up on pests and diseases
- Make sure you register your hive and follow all the rules about beekeeping in your area
- Suit up and get yourself a smoker and a hive tool.

To learn more about Flow Hive, bees and beekeeping, connect with us online at our website [www.honeyflow.com](http://www.honeyflow.com)

 Stay up to date on Facebook/[flowhive](https://www.facebook.com/flowhive)

 Fall in love with bees on Instagram [@flowhive](https://www.instagram.com/flowhive)

 [YouTube.com/flowhive](https://www.youtube.com/flowhive)  
[vimeo.com/flowhive](https://www.vimeo.com/flowhive)

 Tweet stuff at [@flowhive](https://twitter.com/flowhive)